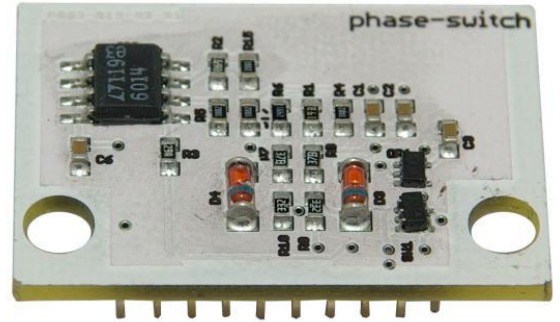




Apollo Components

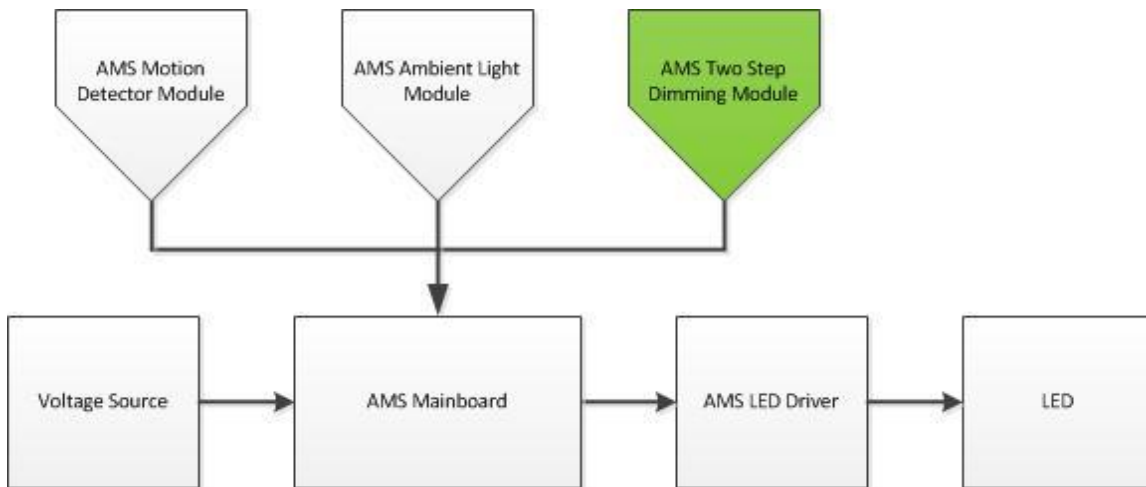


AMS Two Step Phase Dimming Module

The optional Two Step Module is used for controlling two dimming stages with one external signal. :

Features:

- Dimming stages 50% and 100%
- Input voltage = 12V
- Dimming input voltage up to 30V



Electrical Specifications

Input Voltage	12VDC
Input Current	MAX 30mA @ 12V
Input_01	5VDC→30VDC

Ambient Conditions

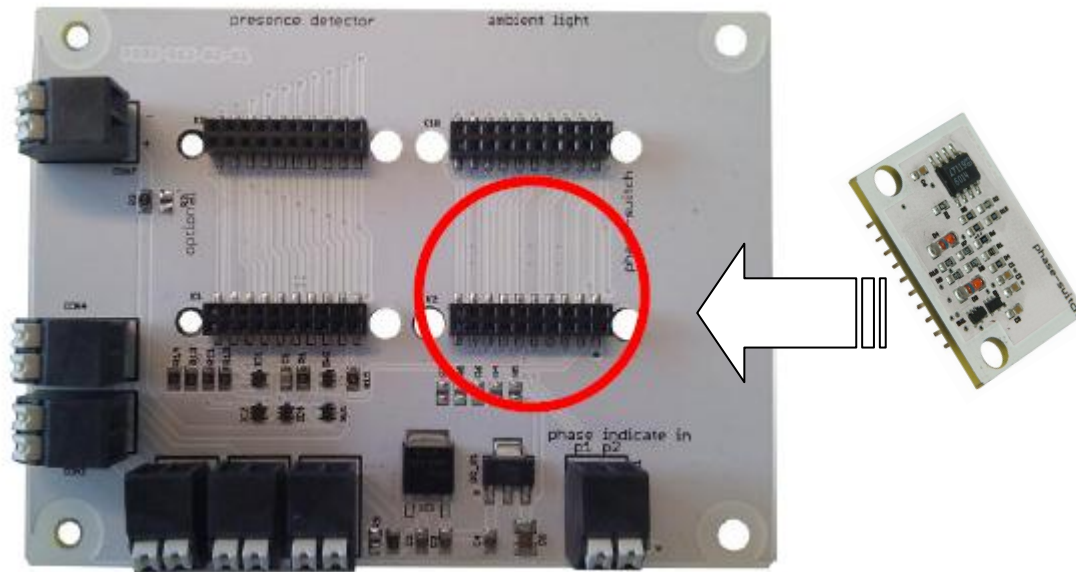
Storage Temperature	-25°C → +85°C
Relative Humidity	5% → 80%

Mechanical Specifications

Dimensions	30mm x 20mm x 25mm
PCB Material	FR4 with top coat white

Switching Conditions

Signal 1 Off	Output 50%
Signal 1 On	Output 100%



This module is compatible with AMS Mainboard