



Apollo SL & PL (Street Light Series)

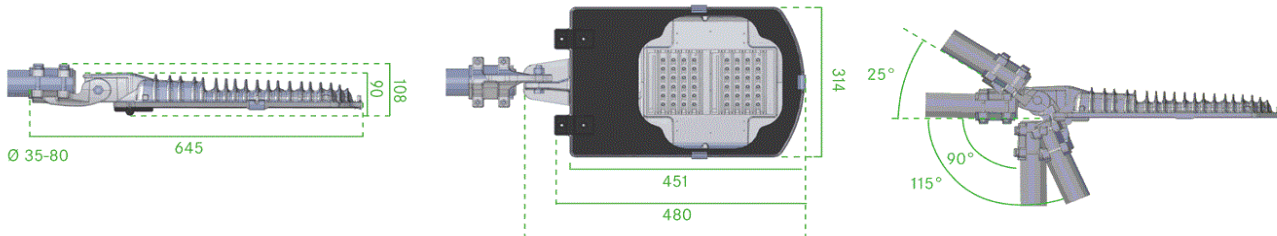
Description

Apollo – The ideal LED lamp for outdoor use that is highly cost-effective. The robust die cast aluminum housing with its finned surface guarantees excellent heat management. Being certified to protection class IP 67, this lamp also functions even under extreme ambient conditions and meets the toughest safety standards.

Specifications

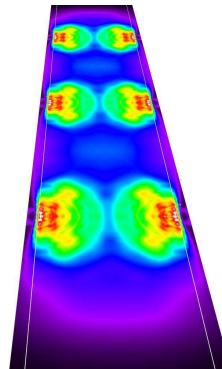
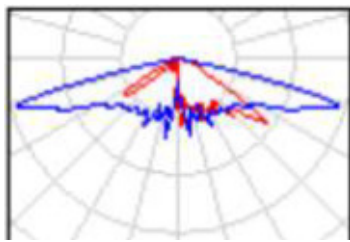
Housing Color	Aluminum or custom powder coating according to the RAL Color Scale
Attachment	Universal holder for pole or lamp standard attachment
Dimming	Daylight sensor, phase dimming, potentiometer, motion sensor
Operating Temperature	-40° to +80°

Number of LEDs	24	36	48	60	72	84	96	108	120
Lumen @ 5000K (35 V) CRI > 80	5000	7500	10000	12500	15000	17500	20000	22500	25000
Lumen @ 6000K (40 V) CRI > 80	6000	9000	12000	15000	18000	21000	24000	27000	30000
Lumen @ 7000K (42 V) CRI > 80	7200	10800	14400	18000	21600	25200	28800	32400	36000
Power Consumption (W)	55	83	111	139	166	194	222	249	277
Current (mA)	1400	2100	2800	3500	4200	4900	5600	6300	7000



Optics

False Color Rendering



Options

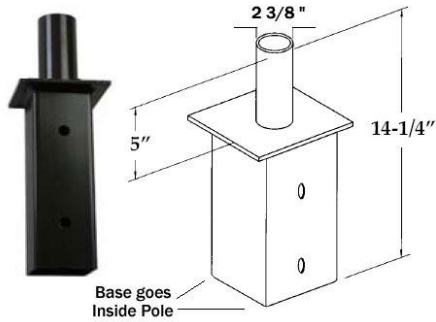
Wireless Module	Optional 900MHz, 2.4GHz, 5GHz MESH
Charging Regulator	Independent operation with solar panel and battery, charge current monitoring



Apollo SL & PL (Street Light Series)

Mounting Accessories

Square Internal Mount Tenons can be used when upgrading or installing AMS LED Lighting on a square light pole. Custom mounting solutions are also available. Standard pole size 1.25" to 2.75"



STRAIGHT SQUARE POLE



Vertical Square Internal Mount, Square Diameter Pole, Single Fixture. Available in 4x4, 5x5 and 6x6in



Horizontal Square Internal Mount, Square Diameter Pole, Two Fixtures at 180 Degrees. Available in 4x4, 5x5 and 6x6in

d



Horizontal Square Internal Mount, Square Diameter Pole, Two Fixtures at 90 Degrees. Available in 4x4, 5x5 and 6x6in



Horizontal Square Internal Mount, Square Diameter Pole, Three Fixtures at 90 Degrees. Available in 4x4, 5x5 and 6x6in



Horizontal Square Internal Mount, Square Diameter Pole, Four Fixtures Available in 4x4, 5x5 and 6x6in



Vertical Square Internal Mount, Square Diameter Pole, Four Fixtures at 180 Available in 4x4, 5x5 and 6x6in



Apollo SL & PL (Street Light Series)

Electrical

90 – 305 V/AC main power supply 50/60 Hz (180-528V/AC optional) or 10 – 48 V/DC without power supply
 >0.9 Power Factor
 <20% Total Harmonic Distortion

CERTIFICATION

UL Listed (Wet Location)
 ISO 9001
 LM79 / LM80 Compliant
 IP67 Rated

Ordering information for Apollo SL series

Example: SL2WW139-S00

Product Family	Version	Light Color	Consumption	-	Voltage	Lens	Factory installed Options
		CW=5000K	55=55W		S=90-305VAC	0= None	0=None
SL	2	NW=6000K	83=83W		H=180-528VAC	A= Type 1	1= Lightning Protection
		WW=7000K	111=111W			B= Type 2	2= Dimmer
			139=139W			C= Type 3	3= Photocell
							4= Custom Power Cable

Ordering information for Apollo PL series

Example: PL2WW139-S00

Product Family	Version	Light Color	Consumption	-	Voltage	Lens	Factory installed Options
		CW=5000K	55=55W		S=90-305VAC	0= None	0=None
PL	2	NW=6000K	83=83W		H=180-528VAC	A= Type 1	1= Lightning Protection
		WW=7000K	111=111W			B= Type 2	2= Dimmer
			139=139W			C= Type 3	3= Photocell
							4= Custom Power Cable

Dimensions: Fixture 24 to 60 LED = 26 x 12 x 3 in
 Weight: 18 lbs

Dimensions: Fixture 72 to 120 LED = 52 x 12 x 3 in
 Weight: 36 lbs